



idrofan
FAN COIL UNIT

FLOOR-MOUNTED - 42N



IT'S CALLED IDROFAN:
IT HAS NO PAST - ONLY A FUTURE

New - it's ready when you are

Whatever your configuration, Idrofan is ready and waiting

New - installation is easier than ever

Wall-mounted, underceiling or concealed, Idrofan installation is easy, quick and failsafe!

- **Underceiling and ceiling-void installation**

The innovative shape of the drain pan eliminates the need for complex calculations to find the correct slope.

- **Ceiling-void installation**

The ducts can be connected directly to the unit before installation, simplifying assembly and reducing installation time.

New - sleek design

Clean, elegant lines.

Stylish design that blends in with any surroundings. The controls are hidden in a compartment under the new grille.



New - efficient, long life filter

Simple and fast removal.

A filter with easy-slide guide rails to simplify periodic cleaning.

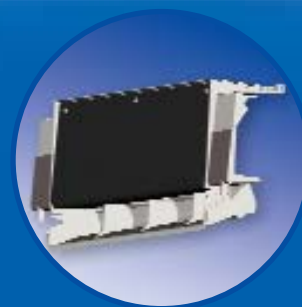
87% larger surface area, extends filter life dramatically: the interval between cleaning operations has trebled compared to a standard filter.

Plus: the special shape offers less resistance to air passing through, guaranteeing a more powerful air flow.



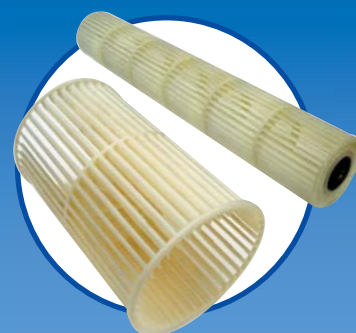
New - reliable long-life drain pan

Install it as you like, even horizontally! The new drain pan is 100% plastic. Its smooth walls ensure perfect adhesion of the insulation material, and you can forget condensation problems.



New - a tangential fan: the sound of silence

The tangential fan with its innovative variable-pitch blades delivers a silent breeze of fresh air - the noise level is one of the lowest ever. For ducted applications the new centrifugal fan offers unprecedented performance.



New - control at the touch of a button

The Idrofan with its clean, soft lines was designed to look good and blend in with any room décor. An ergonomic unit with user-friendly, one-touch controls. Cutting-edge technology: three versions - two electronic - meet every application requirement. Electronic fan speed (autofan) and air distribution (cold draft) control.



it's new

Forget the past.

Now there is an innovative product that will revolutionise air conditioning.

it's idrofán

WE HAVE LISTENED TO YOU!

IDROFAN is the result of our long tradition and experience in air conditioning, combined with the feedback received from you, the hands-on experts.

it's Carrier

The name of the world's largest manufacturer of air conditioning systems, a guarantee of unique reliability and safety.



TECHNICAL DATA 42N			16	25	33	43	50	60	75
Total cooling capacity	Standard - 2 pipes	kW	1,43	2,18	3,14	4,04	4,42	-	-
Sensible cooling capacity	Standard - 2 pipes	kW	1,11	1,82	2,52	3,28	3,55	-	-
Water flow (cooling)	Standard - 2 pipes	l/h	246	375	540	695	760	-	-
Water pressure drop (cooling)	Standard - 2 pipes	kPa	17,8	11,8	10,3	17,6	19,9	-	-
Heating capacity - high fan spd	Standard - 2 pipes	kW	1,88	2,84	3,93	5,38	5,85	-	-
Sound pressure level l/m/h	Standard - 2 pipes	dB(A)	25/35/41	25/35/41	30/41/47	35/45/51	38/47/53	-	-
Sound power level l/m/h	Standard - 2 pipes	dB(A)	33/43/49	33/43/49	38/49/55	43/53/59	46/55/61	-	-
Total cooling capacity	Standard - 4 pipes	kW	1,51	2,18	2,62	4,04	4,2	-	-
Sensible cooling capacity	Standard - 4 pipes	kW	1,13	1,82	2,15	3,28	3,34	-	-
Water flow (cooling)	Standard - 4 pipes	l/h	260	375	451	695	722	-	-
Water pressure drop (cooling)	Standard - 4 pipes	kPa	21,7	14,3	7,7	17,6	18,9	-	-
Heating capacity - high fan spd	Standard - 4 pipes	kW	2,18	3,10	3,54	4,93	6,00	-	-
Sound pressure level l/m/h	Standard - 4 pipes	dB(A)	25/35/41	30/35/42	30/41/47	35/45/51	38/47/52	-	-
Sound power level l/m/h	Standard - 4 pipes	dB(A)	33/43/49	38/43/50	38/49/55	43/53/59	46/55/60	-	-
Power input	Standard	W	32	32	44	57	80	-	-
Fan type	Standard		← Tangential →						
Air flow (L(M/H))	Standard	l/s	43/69/90	72/99/131	69/128/158	111/179/227	128/196/242	-	-
Total cooling capacity	High pressure - 2 pipes	kW	1,44	2,43	3,53	4,17	4,94	5,57	6,55
Sensible cooling capacity	High pressure - 2 pipes	kW	1,12	2,04	2,82	3,31	3,93	4,36	5,23
Water flow (cooling)	High pressure - 2 pipes	l/h	248	418	607	717	850	958	1126
Water pressure drop (cooling)	High pressure - 2 pipes	kPa	16,6	13,6	12,5	20,0	23,0	19,4	18,3
Heating capacity - high fan spd	High pressure - 2 pipes	kW	1,88	3,43	4,65	5,58	6,36	7,30	9,80
Sound pressure level l/m/h	High pressure - 2 pipes	dB(A)	28/34/41	30/37/50	35/46/53	34/46/51	39/50/55	38/49/54	45/54/61
Sound power level l/m/h	High pressure - 2 pipes	dB(A)	36/42/49	38/45/58	43/54/61	42/54/59	47/58/63	46/57/62	53/62/69
Total cooling capacity	High pressure - 4 pipes	kW	1,54	2,73	2,78	4,17	4,65	5,20	5,98
Sensible cooling capacity	High pressure - 4 pipes	kW	1,12	2,15	2,38	3,31	3,74	4,18	4,99
Water flow (cooling)	High pressure - 4 pipes	l/h	265	470	478	717	800	894	1029
Water pressure drop (cooling)	High pressure - 4 pipes	kPa	22,2	17,7	10,6	20,0	24,1	25,0	36,3
Heating capacity - high fan spd	High pressure - 4 pipes	kW	2,15	3,62	3,27	4,91	4,86	5,66	6,24
Sound pressure level l/m/h	High pressure - 4 pipes	dB(A)	30/36/41	31/37/50	35/47/54	34/46/51	39/50/55	38/49/54	45/54/61
Sound power level l/m/h	High pressure - 4 pipes	dB(A)	38/44/49	39/45/58	43/55/62	42/54/59	47/58/63	46/57/62	53/62/69
Power input high pressure	High pressure	W	32	78	85	75	98	113	164
Fan type	High pressure		← Centrifugal →						
Air flow (L(M/H))	High pressure	l/s	60/74/92	81/100/167	93/144/190	125/194/238	150/231/282	175/272/339	228/328/438
Electric heaters L/H		W	500/1000	1000/2000	1000/2000	1500/3000	1500/3000	1500/3000	1500/3000
Unit with cabinet - H x L x D		mm	657/830/220	657/1030/220	657/1030/220	657/1230/220	657/1230/220	657/1430/220	657/1430/220
Weight		kg	17	19	19	22	22	35	35
Concealed units - H x L x D		mm	618/599/220	618/799/220	618/799/220	618/999/220	618/999/220	618/1199/220	618/1199/220
Weight		kg	13	15	15	16	16	28	28
Power supply		V-ph-Hz	← 230-1-50/230-1-60 →						

The above data refer to Eurovent Conditions.

Cooling conditions: 27°C Dry bulb / 19°C Wet bulb air temperature; 7°C/12°C entering and leaving water temperature at high fan speed.

Heating conditions 2 pipes: 20°C air temperature, entering water temperature: 50°C, same water flow rate as in cooling condition test at high fan speed.

Heating conditions 4 pipes: 20°C air temperature, entering water temperature: 70°C, temperature difference: 10K, high fan speed

Sound pressure is measured in a 100 m² room with 0,5 sec reverberation time. - High pressure is with centrifugal fan - Standard pressure is with tangential fan



Order No.: 18315 - 20 - 05/2005
 Supersedes order No.: RLCN2A61-09/2002
 Manufacturer reserves the right to change
 any product specifications without notice